

Land Travelers

- Coupeville/Keystone ferry to Port Townsend
make reservations on wsdot.com
ferry is on about a 1.5hr cycle
- Follow route from Port Townsend toward Fort Flagler. Mystery Bay is about 1/3 the way up Marrowstone Island.
- If you are staying over, there are lots of B and B's in Port Townsend or try the The Inn at Port Hadlock
360.385.7030
- You can also go via Edmonds /Kingston ferry and the Hood Canal Bridge
- There are several Land Yacht Parks in the area.



Mission

To foster safe boating and the responsible enjoyment of our marine resources by our members and the community at large through educational programs, community outreach, and boating related activities afloat and shore.

Vision

To be a respected member of the Whidbey Island community, valued for our good stewardship of the marine environment, our quality boating education and above all, our great gatherings.

Affiliations

Boat US

US Sailing

Pacific International Yachting Assoc.



SWYC

South Whidbey Yacht Club

PO Box 316
Greenbank, WA 98253
www.swyachtclub.org



SWYC

**CRUISE TO
MYSTERY BAY
JUNE 11-12
2011**

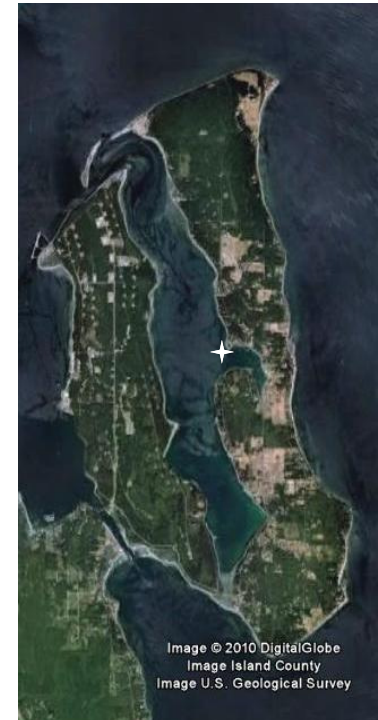


Image © 2010 DigitalGlobe
Image Island County
Image U.S. Geological Survey

South Whidbey Yacht Club

Cruise Captains

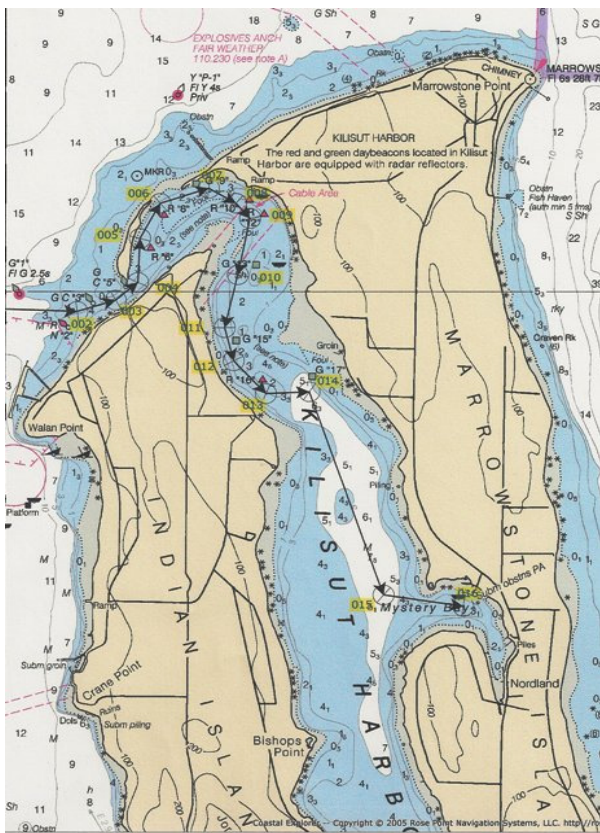
Dennis Pittis

djDesign@whidbey.com

Debra Richardson

dannrich@whidbey.com

Possible route into Kilisut Harbor.
 Watch your depth sounder and wake,
 and do not skip any mark numbers
Not for navigation - reference only



Port Townsend Tides
 If you draw 5ft, you need at least 4ft on the tide chart for Port Townsend.
 Follow the marks in order to stay in channel.

ITINERARY (INFORMAL)
MYSTERY BAY
JUNE 11-12 2011

At varying times during the weekend there will be dock racing, incredible cruising stories heroic repair tails, and many pontifications on everything.

FRIDAY 6/10
 Early arrivals may secure dock space. There are 6 or 7 state buoys and a little room for a short-scope anchor .

SATURDAY 6/11
 Early afternoon walks to Nordland General Store, East Beach, or Fort Flagler.

1400 hrs Shoreside Seafood Buffet by Mystery Bay Seafood Co. \$20 per person
 (Please RSVP with Deb or Dennis for the Buffet, so we have enough clams and fish.)

SUNDAY 6/12
 More exploring by land and sea, waiting for the tide to come in for those departing.--

1600 hrs Happy hour on the dock for those staying over.

Please remember pay for moorage and buoy use or have a State Park pass.

3.4 mi to Marrowstone Pt. Fort Flagler
 .6 mi to East Beach
 .7 mi to Nordland General Store




**SOUTH WHIDBEY
 YACHT CLUB**

PO Box 316
 Greenbank, WA 98253
 www.swyachtclub.org